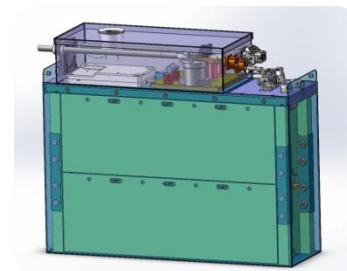


Forklift Lithium Battery

Vision Battery VFL forklift lithium battery series, covering the global lithium battery application of electric forklifts, can be customized according to customer needs, with high charging efficiency, high energy efficiency, long life, zero pollution and zero emissions, high safety, suitable for high and low temperature environmental application conditions, daily maintenance-free.



Forklift Lithium Battery Parameter
(25.6V、51.2V、83.2V)

Item		Parameter			
Cell	Model	25.6V 150Ah、25.6V 200Ah、 25.6V 300Ah、25.6V 400Ah	51.2V 300Ah、 51.2V 400Ah	83.2V 300Ah、 83.2V 400Ah	
	Cell Material	LFP			
	Cell Type	36130162A-50Ah			
	Cell Nominal Voltage (V)	3.2			
	Cell Min. Voltage (V)	2.5			
	Cell Max. Voltage (V)	3.65			
	Cell Nominal Capacity (Ah)	50			
Battery System	Nominal Voltage (V)	25.6	51.2	83.2	
	Battery Series Connection	8S / (3~8) P	16S / (6~8) P	26S / (6~8) P	
	Nominal Capacity (Ah)	150 ~ 400	300 ~ 400	300 ~ 400	
	Total Energy (kW)	3.84 ~ 10.24	15.36 ~ 20.48	24.96 ~ 33.28	
	Charge	Maximum Continuous Current (A)	200A	300A	300A
	Discharge	Maximum Continuous Current (A)	200A	300A	300A
	Charging Temperature(℃)		0~45		
Discharging Temperature(℃)		-20~55			

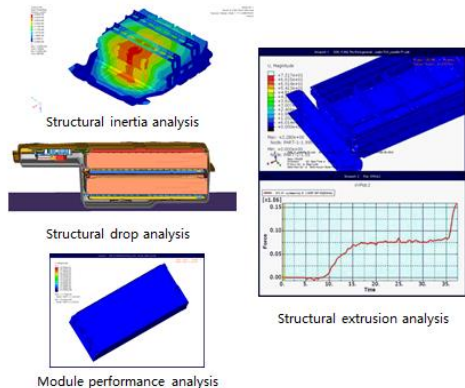
- RS485 communication CAN communication output monitoring
- Built-in overcharge automatic protection
- Over - discharge and over - temperature condition protection
- SOC and SOH state display
- Support for quick charging, 2 ~ 4 hours full
- Supports internal battery balance
- Support for custom development
- Support remote monitoring, cloud platform

Forklift Lithium Battery



Module Parameter

Module	L	W	H
25.6V 150Ah	510	165	431
25.6V 200Ah	600	180	431
83.2V 300Ah	840	600	442
83.2V 400Ah	1000	700	442



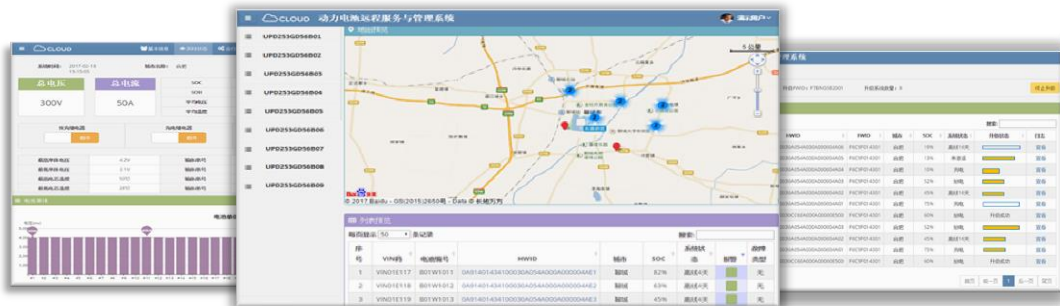
BMS Parameter

No.	Item	Parameter			
1	Working temperature	-40℃ ~ 85℃			
2	Storage temperature	-40℃ ~ 105℃			
3	Working humidity	5 ~ 95%			
4	System power supply	Voltage range 6 ~ 36V	Typical value 12V、24V		
5	Communication unit	CAN bus	4 way (Charging / vehicle / Master & slave / reserved)		
		isoSPI	Support		
		GPRS	Support		
6	SOC estimation accuracy	≤5%			
7	Supporting agreements and standards	CCP、UDS、OBD-ii、GB/T 32960			
8	Acquisition unit	Core voltage detection	24 series	0 ~ 5V	±2mV
		Box temperature detection	8 way	-40℃ ~ 125℃	±1℃
9	Execution unit	High voltage detection	0 ~ 800V		
		Current detection	Diverter	±500A	±0.5%FSR
		Insulation detection	B+/B-	0-6MΩ	5K or 5%
10	Data Storage	On board storage	128MB SLC NAND FLASH		

Functions of BMS: reserve power output, switch signal input detection, dc charging pile low-voltage power input, internal temperature detection, power supply voltage detection, delay power down, and expansion of all-in-one functions.

Enhanced functions: relay control, current detection, USB reading function, ON signal, CHG_RDY charging signal, level signal input, RS485 communication, power supply for display screen, CAN communication, slave power supply and DTU power supply, internal clock.

Forklift Lithium Battery



- Battery Monitor
Location information, system status, alarm status, battery data
- Query Statistics
Fault history, operation history, upgrade history, equipment change
- Remote Management
BMS remote upgrade, remote control, remote diagnosis
- System Management
Battery information maintenance, SIM card management, system account management
- Value-added Service
Vehicle hot area analysis, driving behavior analysis and big data analysis